

The Victoria

4 Bedroom/2.5 Bath



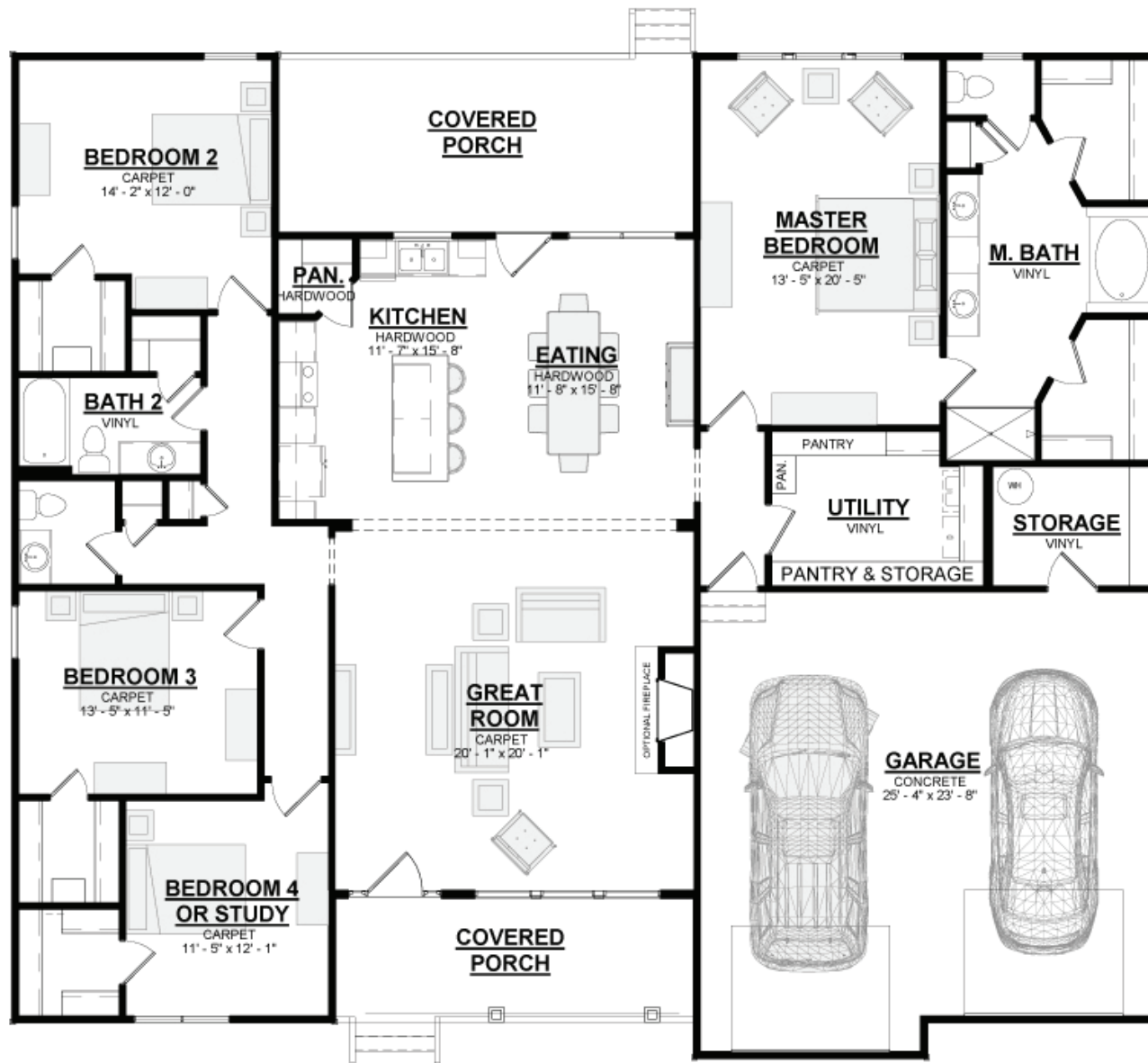
1-800-AHP-Home

| AmericasHomePlace.com

© 2019 America's Home Place, Inc. Any information shown in this ad is subject to change at anytime. Illustrations show options and upgrades not included in base plan. Specifications vary by location. Home designs represented on this page are property of America's Home Place and are intended for demonstration purposes only. Any unauthorized duplication, copying or reproduction, or any other use, is strictly prohibited. FL #CR-C057203, NC#36341 Revised 5/22/19



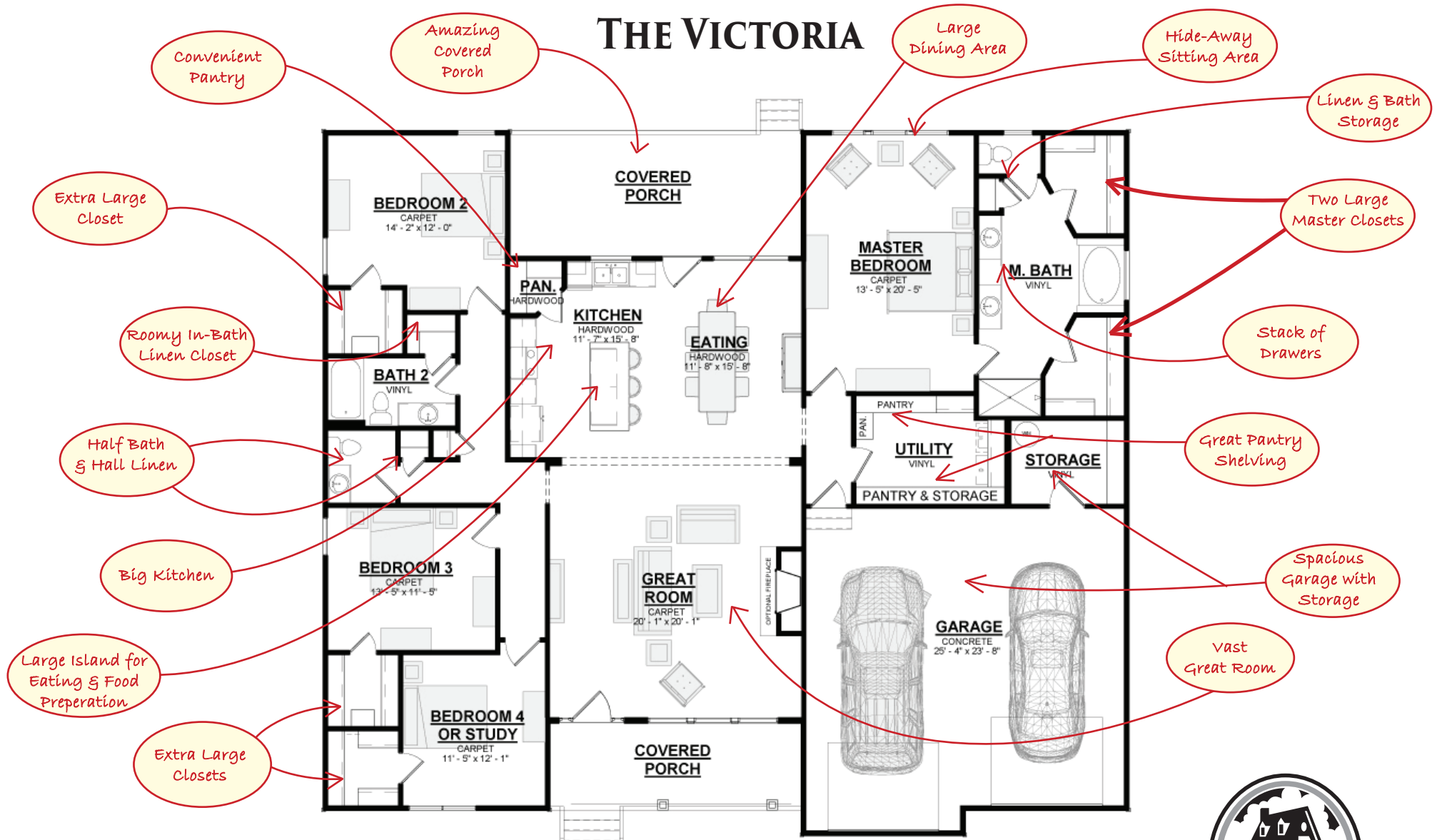
First Floor



The Victoria

Total Heated.....	2400
Front Porch.....	140
Covered Rear Porch.....	232
Garage.....	710
Total Under Roof.....	3482

THE VICTORIA



THE VICTORIA

4 Bedrooms
2.5 Baths

You'll fall in love with this regal craftsman-style ranch with its large Porches, elegant Living spaces, and luxurious Master Suite. If you're looking for extra Storage this is the house plan for you. With large Bedroom Closets and other closets thoughtfully placed throughout the house you will find the perfect place for everything.

SPECIAL FEATURES

- **Luxury Sized Master Bedroom with Sitting Area**
- **His & Her Closets in Master Bath**
- **Large Vanity in Master Bath with Stack of Drawers**
- **In-Kitchen Pantry Plus Pantry Shelves in Utility Room**
- **Large Kitchen Eating Area**
- **Amazing Covered Rear Porch**
- **In-Bath Linen Closet for Secondary Bath**
- **Hall Linen Closet for Half Bath**
- **Large Walk-In Closets with Storage in All Bedrooms**
- **Deep Front Porch for Relaxing Seating Arrangements**
- **Storage Room with Shelves in Garage**
- **Spacious Two-Door Garage**

THE VICTORIA

SQUARE FEET

First Floor	2,400
Garage	710
Front Porch	140
Rear Porch	232
Total Under Roof	3,482

SQUARE FEET OF SHELVING

Master Bedroom	52
Bedroom 2	37
Bedroom 3	37
Bedroom 4	24
Linen Closets	41
Master Linen	17
Kitchen Pantry	55
Utility Pantry	174
Coat Closets	3
Garage Storage	53
TOTAL	493

LINEAR FEET OF CLOSET ROD

Master Bedroom	39'
Bedroom 2	15'
Bedroom 3	17'
Bedroom 4	18'
Utility Room	8'
Coat Closet	2'
TOTAL	99'